



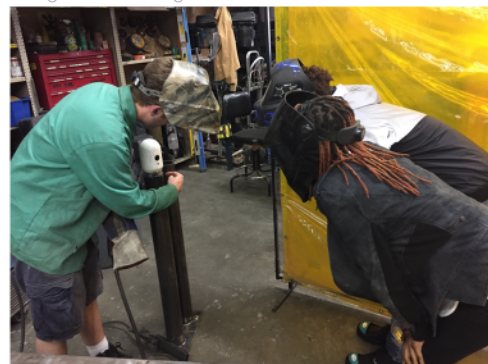
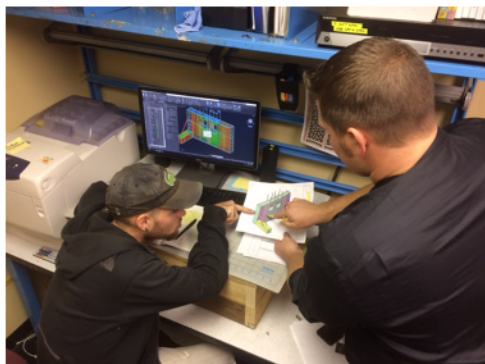
Give to the Smithsonian Institution

TO BRING FABRICATION SKILLS TO HIGH SCHOOL YOUTH

This Smithsonian Folklife Festival seeks funding for its inaugural after school Tech-Teach program, a five-week intensive skills training course for DC-area high school students.

This program will teach young people traditional and high-tech fabrication skills, including design and computer-aided drafting (CAD), metal fabrication, welding, traditional carpentry, woodworking, CNC machine operation, and more. The program seeks support in the form of cash donations, tools, equipment, raw materials, and other resources to improve and augment the existing resources available at the Folklife fabrication facility.

Below: students and staff work together to design and build installation structures.



The Folklife fabrication facility in Lanham, Maryland currently houses all production materials and tools used to build and support the annual Smithsonian Folklife Festival. In March 2018, the facility will serve as the learning studio for the Tech-Teach program, where students will design and construct scenic and structural elements for a new iconic structure to be installed by staff later in the summer on the National Mall for the 2018 Folklife Festival. Though the space and equipment are excellent resources, the Tech-Teach program seeks **additional funding** to improve, augment, and outfit this facility. This support will afford students the opportunity to learn and develop skills that contribute to their educational and professional growth, and make connections that may lead to future employment with local businesses or enrollment in a vocational or college program.

Cash donations will also support transportation and meal stipends for participating students, additional program staff and instructor compensation (excluding salary employees), purchase of tools, equipment, and raw materials including computer upgrades and software licenses, and upgrades to our existing fabrication tools.

We look forward to making a difference in these young peoples' lives, and are excited and thankful to have your support! To get involved or find more information, please contact:

Tyler Nelson
Technical Director
(202) 633-0658
nelsontl@si.edu

Kyle Bancroft
Research & Implementation Coordinator
(202) 633-6437
bancroftk@si.edu

Below: the Folklife Festival fabrication shop awaits another season of activity.



Thank You!

© 2018 Smithsonian Center for Folklife and Cultural Heritage

SMITHSONIAN
FOLKLIFE
FESTIVAL

SMITHSONIAN
CENTER FOR
FOLKLIFE
& CULTURAL
HERITAGE