

CAMP HAS A BALL

R
Road Recordings

- Camp jams piano; Dude Skiles trumps; Laredo, Texas
- Deep in the arms of Bacchus, he sings Refugio Blues
 (pronounced Refurio, if you please)



Mr. Red Camp
548 Naples Ave.
Corpus Christi, Texas

Dear Red and Alvis:

I understand that a wealthy pupil of yours who collects old worn out thousand dollar bills has bought that old 6-pedal upright. Also understand he has a swimming pool. I wonder how it (and you) would sound recorded under water. I don't know about the piano, but you would be fully submerged.

E. C.

Mr. Emory Cook
Stamford, Conn.

Dear Mad,
Impetuous Scientists:

What kind of cigarette did you switch to in Mexico? The action on an upright is a weight action, depending on the weight of the wooden hammers to return the key. Now in water, the hammers would float. Only very, very dry gin would do it.

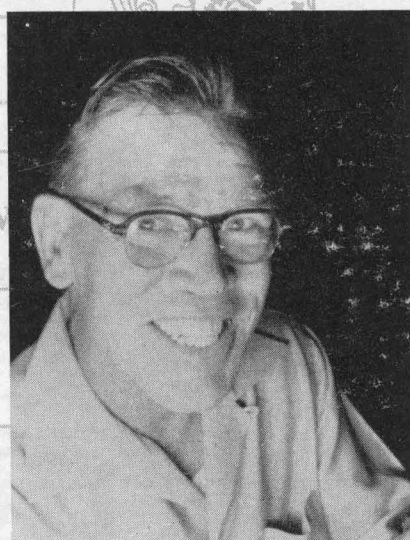
I'm getting awfully self-conscious about my letter-writing now that it's becoming deathless prose. One is to never know when one is to one's recording company writing when one is going perhaps to see one's manuscript turn to in a flash cold print leaving one's participles et al split and dangling.

Have you considered jazz harp-sichord? There's one we could use in Austin. I'm working on a sad little theme in a Bach Prelude that might turn out OK. Just found out an amazing thing: Camp can't improve on Bach. But it's fun noodling.

See you in time for hurricane Bertha or Charlie.

Red and Alvis

CAMP HAS A BALL



THE MUSIC

The "A" side of this record was made impromptu at a late - night "party" the same evening. We first encountered Red. The scene--Plaza Hotel in Laredo; the background "audience", a lot of friends and cronies of Red and Dude Skiles.

The "B" side is collected from odd moments when even Red Camp's towering stamina had begun to fade, the flame weak and burning low. In such moments, and only then, Red sings. (You can hear the air-conditioning if your speakers go low enough.)

FIDELITY OF RR

Most RR discs are "high fidelity". All records are identified in the catalog, however, as HF, MF, and LF, for high, medium and low fidelity. MF and LF releases may be the result of field work with a spring-wound machine or 7 1/2" sec. tape originals or non-condenser-microphone work, for example. However, in each case, the MF and LF discs are released because they carry hard-to-find material which is precious to collectors.

IMPORTANT

Do not order Road Recordings until you have read carefully the catalog descriptions. Descriptions are made as complete as possible in order to warn away those who would not be interested. Since WE CAN NOT ACCEPT RECORDS IN RETURN or for exchange in this "Limited Edition" series.

This is a DUPLEX RECORDING

This record can be played on either regular LP or binaural machines. For standard LP listening, play only the outside band in the ordinary way. By itself, this band is an ideal point-source single-microphone pick-up. For binaural listening, a two-headed arm or Cook Binaural Clip Conversion is necessary in order to play both bands of grooves simultaneously.

COOK LABORATORIES — 114 MANHATTAN ST. — STAMFORD, CONN.